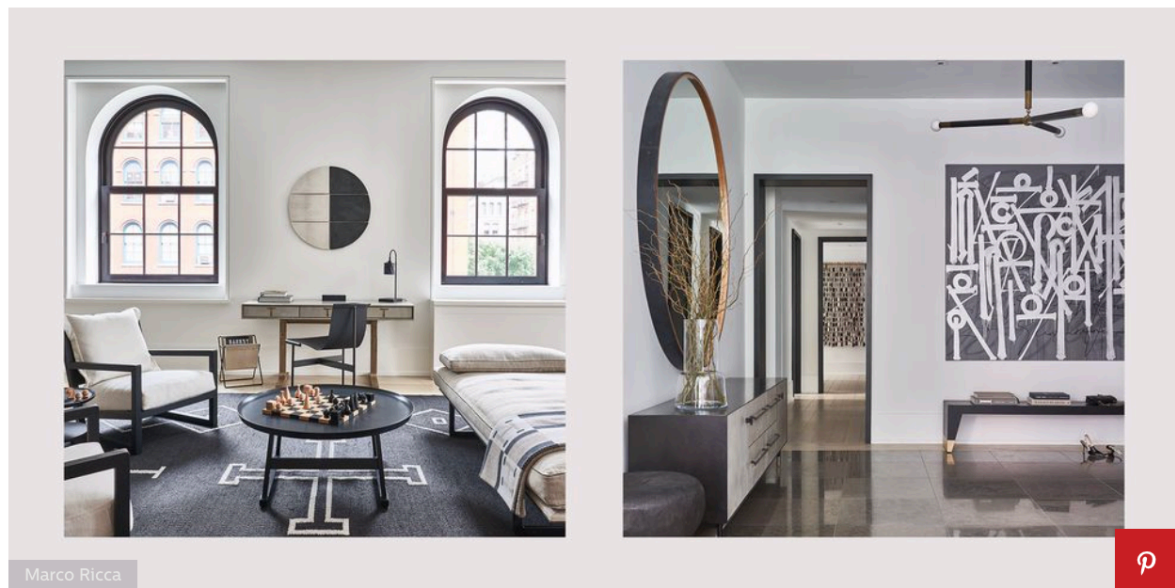


## A LUXURIOUS TRIBECA LOFT REDEFINES FAMILY LIVING

*In a pre-war building known as NYC's "celebrity dorm," a family of four finds their permanent dream home.*



BY LUCIA TONELLI DEC 4, 2018



When an urban family outgrows their petite city space, they move to the suburbs. When the Dell family outgrew their petite Tribeca apartment, they stayed in their neighborhood and doubled their square footage. Ben and Nicole Dell, who have two children and a pet yorkie, wanted a move-in ready space that, with a few minor touch-ups, would become their dream home. Their initial search yielded plenty of potential-rich homes, though they required a hefty amount of renovating to become the perfect landing spot. Enter 443 Greenwich. The gorgeous pre-war building that has attracted the likes of A-list celebrities and NYC elite was newly remodeled and centrally located—a space they referred to as “an instant gratification” home.

With its arched windows, wide-plank oak floors, exposed beams, and massive custom kitchen, the airy loft was hard to pass up. The couple enlisted Chelsea Reale and Diana Rice of NYC interior design firm [SISSY + MARLEY](#) to tweak the already gorgeous space into something personal—and permanent. “We design spaces that families want to live in—homes that are chic but always functional,” the designers explain. Having worked with Reale and Rice on previous homes, the Dell family effectively weaved their own design aesthetic into a detail-oriented, layered space that would suit all of the family’s needs. Through a neutral palette, custom millwork, and a meticulously curated selection of personal accents, the home was transformed into a comfortable, unpretentious space that felt equal parts luxurious and lived-in.

Read on for a full tour of the breathtaking family loft.

### OPEN-CONCEPT LIVING SPACE



Marco Ricca

Because of the living room's generous size, it was important that the space felt cozy and warm, while also allowing for easy entertaining, dining, and relaxing. Contrasting textures in the sofa ([Montauk sofa](#)), the rug ([Merida Studio](#)), and the shearling chairs ([Kelly Wearstler](#)) created a layered feel, while the sleek cocktail table ([Apparatus](#)) modernized the area. The custom millwork, as seen throughout the home, is by [Nancy Nienberg](#) and [Joel Dean](#).



Marco Ricca

### DINING AREA

The designers added custom millwork throughout the apartment, and brought in additional custom pieces curated by local designers and artisans. In the dining room, the table and credenza are by [BDDW](#), the chairs are by [Carl Hansen](#), and the pendant and sconce are by [Apparatus](#).

## LIVING ROOM



Marco Ricca

The Dell family wanted a neutral palette that would stand the test of time, something they would never get bored of. The space was enlivened with layers of texture, varying finishes, and unique fabrics. Each piece is packed with beautiful detailing, lending a more subdued elegance that didn't overwhelm any particular space.

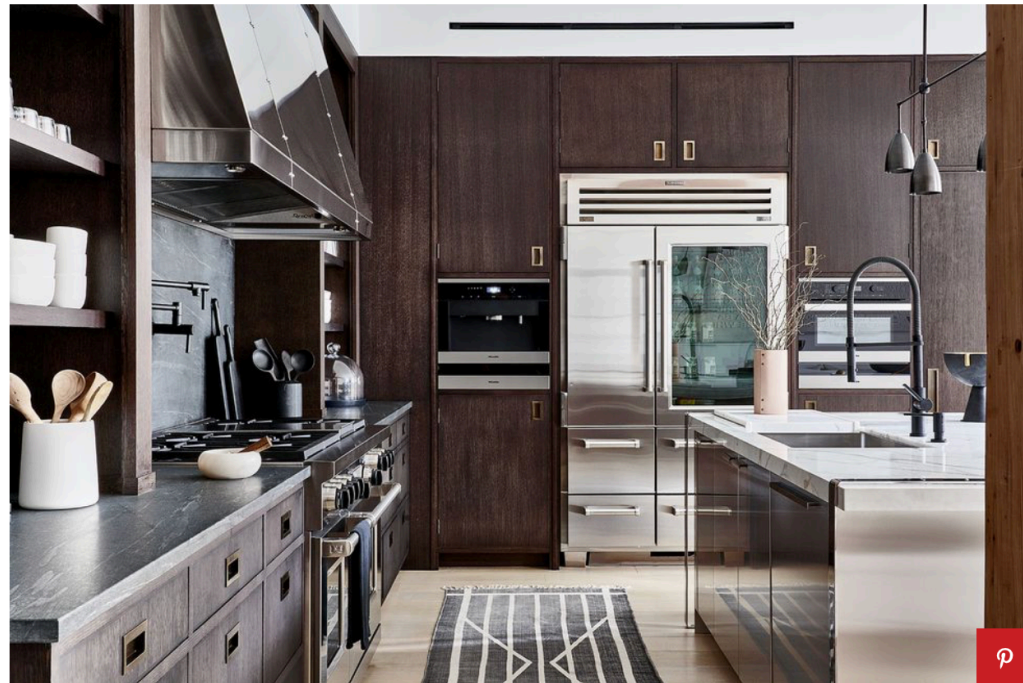
## BANQUET



Marco Ricca

Located directly off of the kitchen, the banquet area is spacious enough for the entire family to enjoy, and is a perfect space for entertaining. The banquet table is by [Desiron](#) and the custom cushions are by Peter Jonas. The artwork above the banquet is by [Peter Buchman](#), the table is surrounded by contrasting black chairs by [Carl Hansen](#), and the adjacent stools are by [Gubi](#).

## CUSTOM KITCHEN



Marco Ricca

The separate open kitchen was designed to support a large family, complete with a custom banquet by Nancy Nienberg + Joel Dean.

## FOYER



Marco Ricca

When you step into the apartment from the private elevator (shared by Ryan Reynolds), a grand entryway makes a dramatic statement, complete with art by [Retna](#), a bench by [Desiron](#), and a mirror and credenza by [BDDW](#).

## MASTER BEDROOM



Marco Ricca

The serene and spacious master bedroom is the perfect spot for the couple to retire at night, relax, and read a book or get work done. The statement black bed frame by [Maxalto](#) adds a bold contrast against the white walls and bedding, while a [Madeline Weinrib](#) rug infuses the room with texture. A lounge chair by BDDW provides a comfortable seating area, and the round mirror by [Jim Zivic](#) pairs nicely with the arched windows.



Marco Ricca

## WALK-IN CLOSET

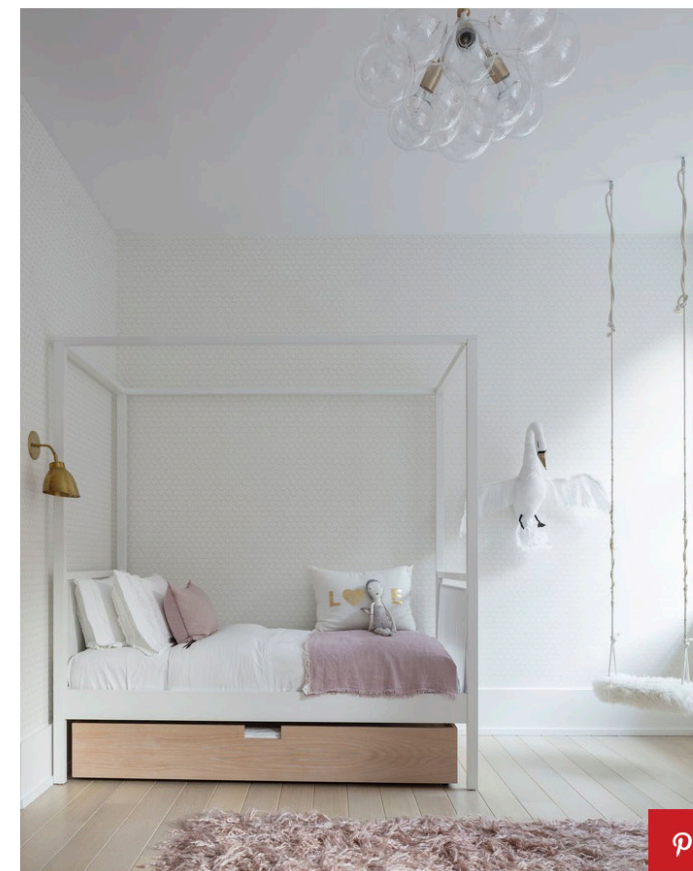
Located directly off of the master bedroom, this luxurious Poliform closet is every fashionista's dream.



Marco Ricca

## PLAYROOM

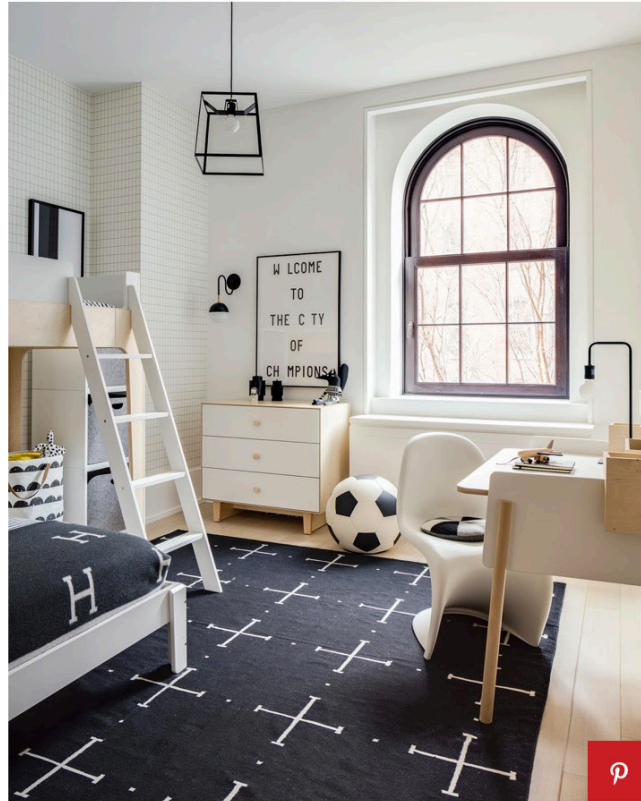
The Dell couple transformed this space into a playroom for their two children to watch movies, create art, and get homework done. Subtle starry wallpaper by [Marley + Malek Kids](#) is both youthful and elegant, and a table by [Ducduc](#) centers the space.



Marco Ricca

## GIRLS ROOM

In Alexandra's bedroom, a magical and dreamy aesthetic was achieved with a light and girly palette consisting of whites and pinks. A swing by [Clic](#) serves as the focal point of the space, and a hand made swan by Tamar Mogendorf accents the wall.



Marco Ricca

## BOYS ROOM

Described as "a fun spot to chill, play, and dream," the son's black and white bedroom is a chic take on a traditional sports theme, with furniture by [Oeuf](#), a custom Madeline Weinrib rug, lighting by [Atelier De Troupe](#) and [Iacoli & Mcallister](#), and wallpaper by [Ferm Living](#).



Marco Ricca

## LAUNDRY ROOM

Every New Yorker dreams of having their own laundry room, and this space makes the case for an in-house wash & dry. The simple room includes plenty of storage space and a serene, neutral design that flows with the rest of the home. The millwork is by [Henry Built](#).

Photography by [Marco Ricca](#).